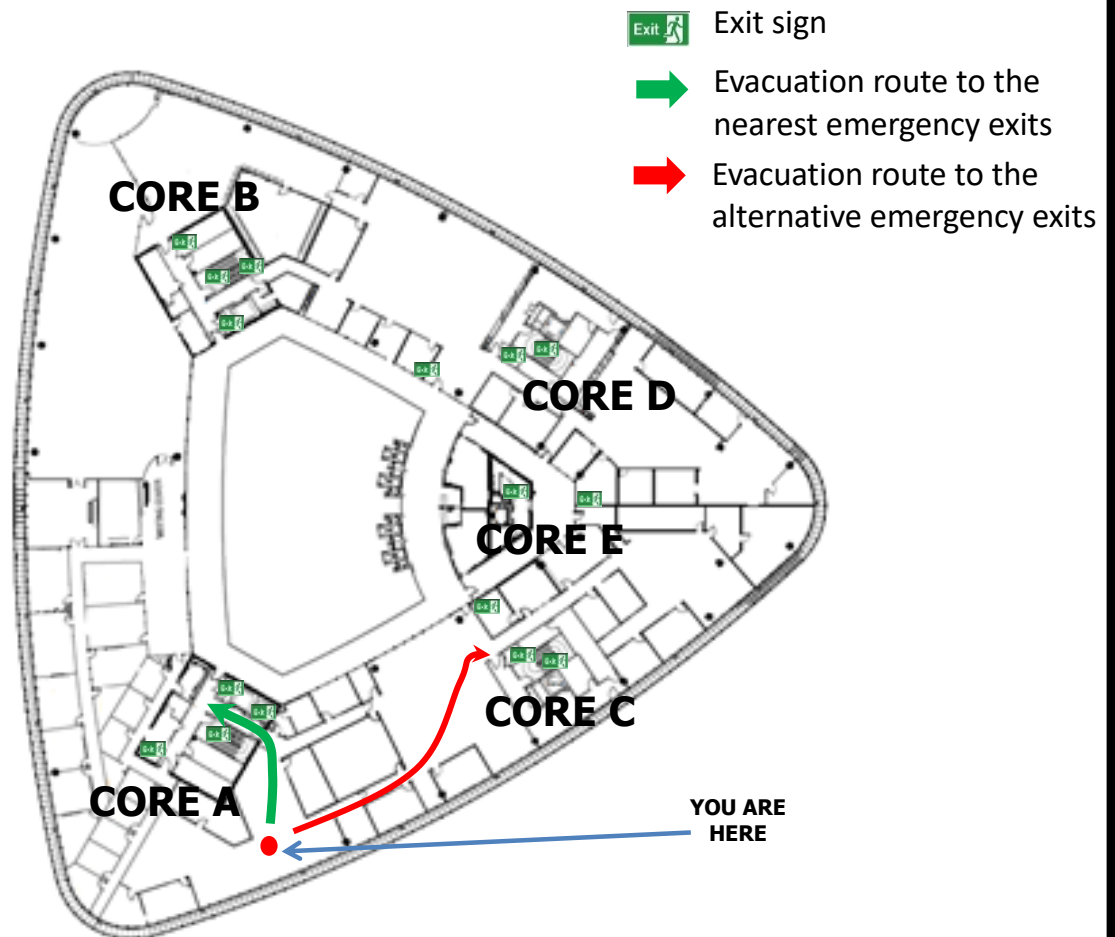


In Case of Emergency

Evacuation Route

(Office Area Core A, Level 1)



EVACUATION

- Upon hearing the fire alarm, wait for further instructions before commencing to leave the building.
- Once the instruction is given for evacuation, collect only essential items.
- Do not use the lifts. Proceed to the nearest exit and make your way down to the Ground Floor exits.
- If the nearest exit is inaccessible, then move to the other alternative exits.
- Make your way to the emergency assembly area located at the open carpark of the National Science Centre.

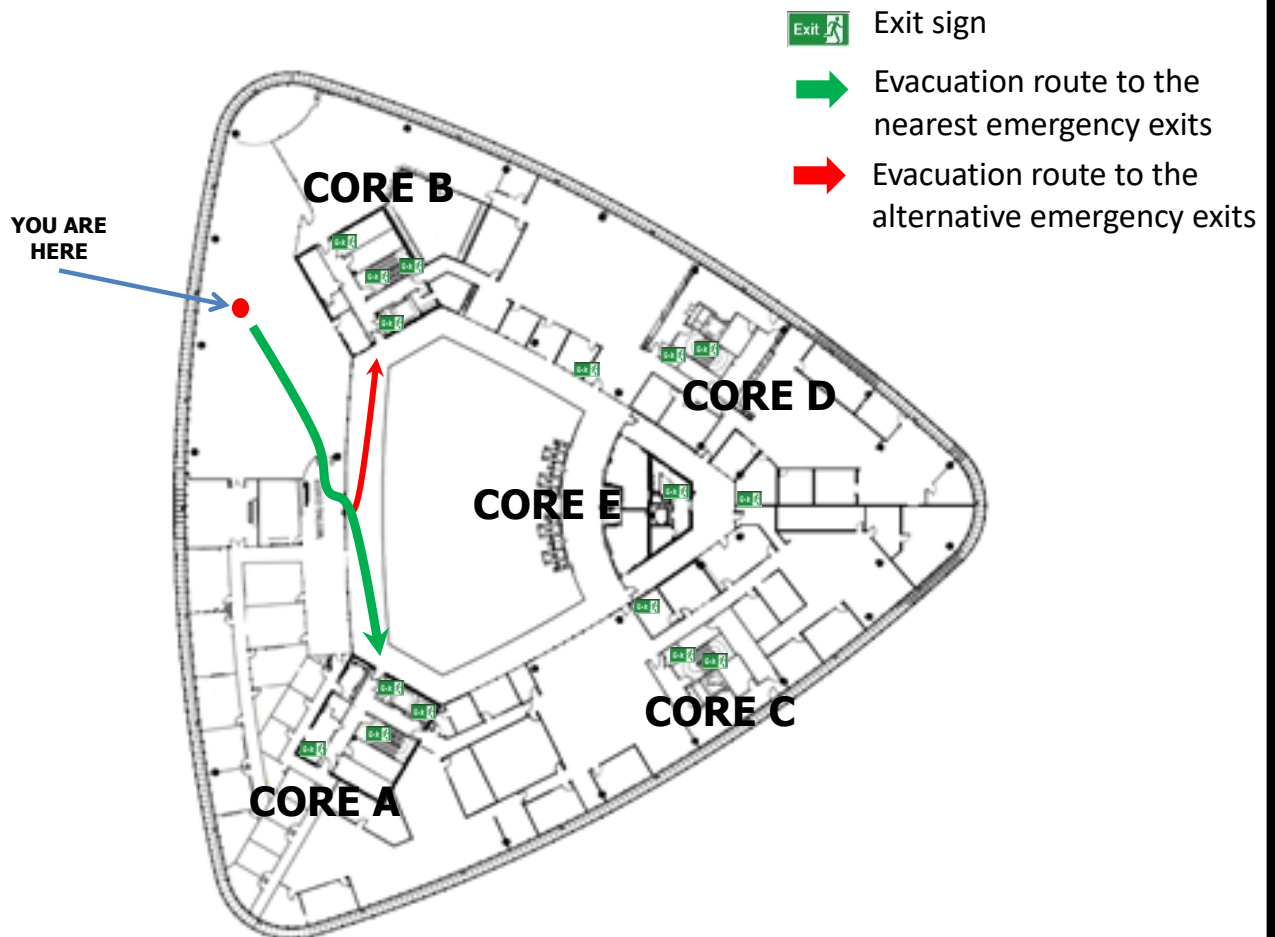
ALERT

- If you notice any incident that may threaten yours and your colleagues' well-being, please call the SC Hotline immediately at 03-62048886/8887.
- Remain calm, state your full name and location, describe the emergency, and follow the instructions from the SC Hotline.

In Case of Emergency

Evacuation Route

(Office Area Core B, Level 1)



EVACUATION

- Upon hearing the fire alarm, wait for further instructions before commencing to leave the building.
- Once the instruction is given for evacuation, collect only essential items.
- Do not use the lifts. Proceed to the nearest exit and make your way down to the Ground Floor exits.
- If the nearest exit is inaccessible, then move to the other alternative exits.
- Make your way to the emergency assembly area located at the open carpark of the National Science Centre.

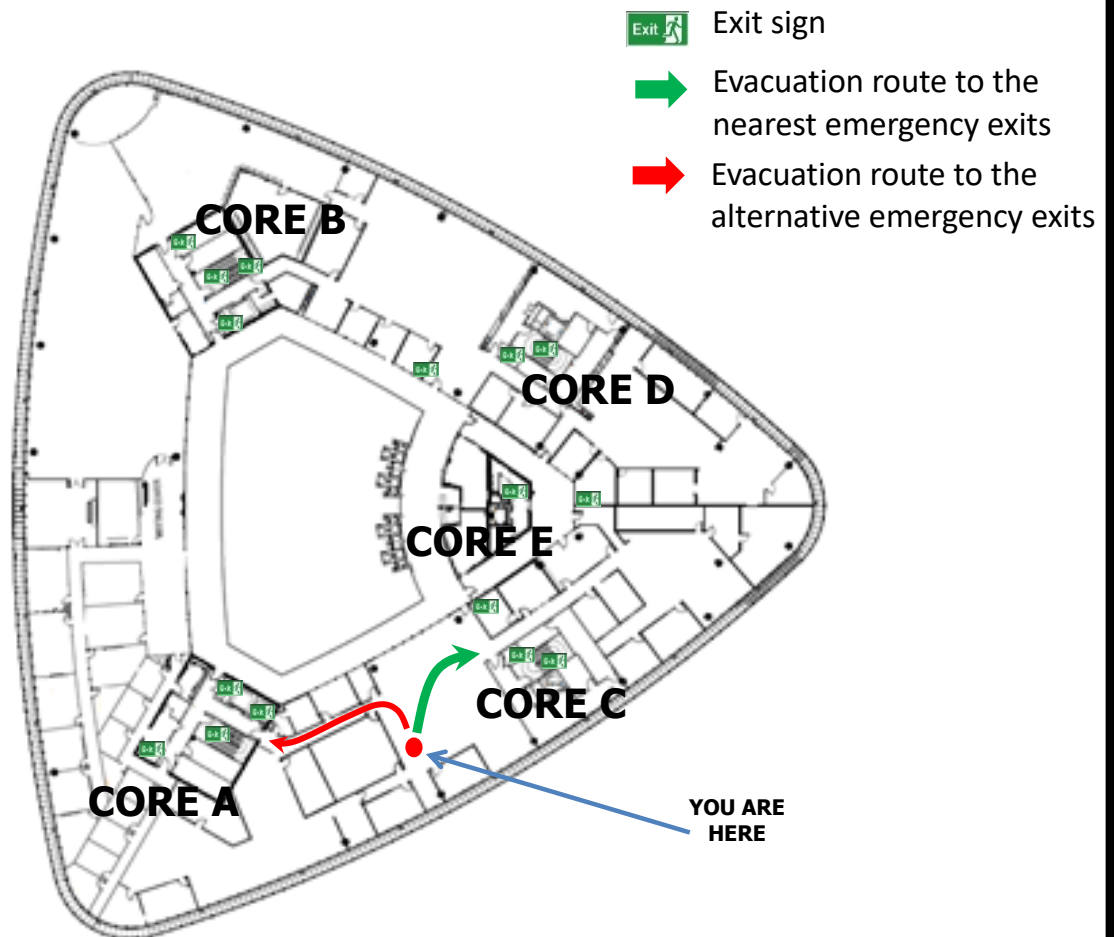
ALERT

- If you notice any incident that may threaten yours and your colleagues' well-being, please call the SC Hotline immediately at 03-62048886/8887.
- Remain calm, state your full name and location, describe the emergency, and follow the instructions from the SC Hotline.

In Case of Emergency

Evacuation Route

(Office Area Core A-C, Level 1)



EVACUATION

- Upon hearing the fire alarm, wait for further instructions before commencing to leave the building.
- Once the instruction is given for evacuation, collect only essential items.
- Do not use the lifts. Proceed to the nearest exit and make your way down to the Ground Floor exits.
- If the nearest exit is inaccessible, then move to the other alternative exits.
- Make your way to the emergency assembly area located at the open carpark of the National Science Centre.

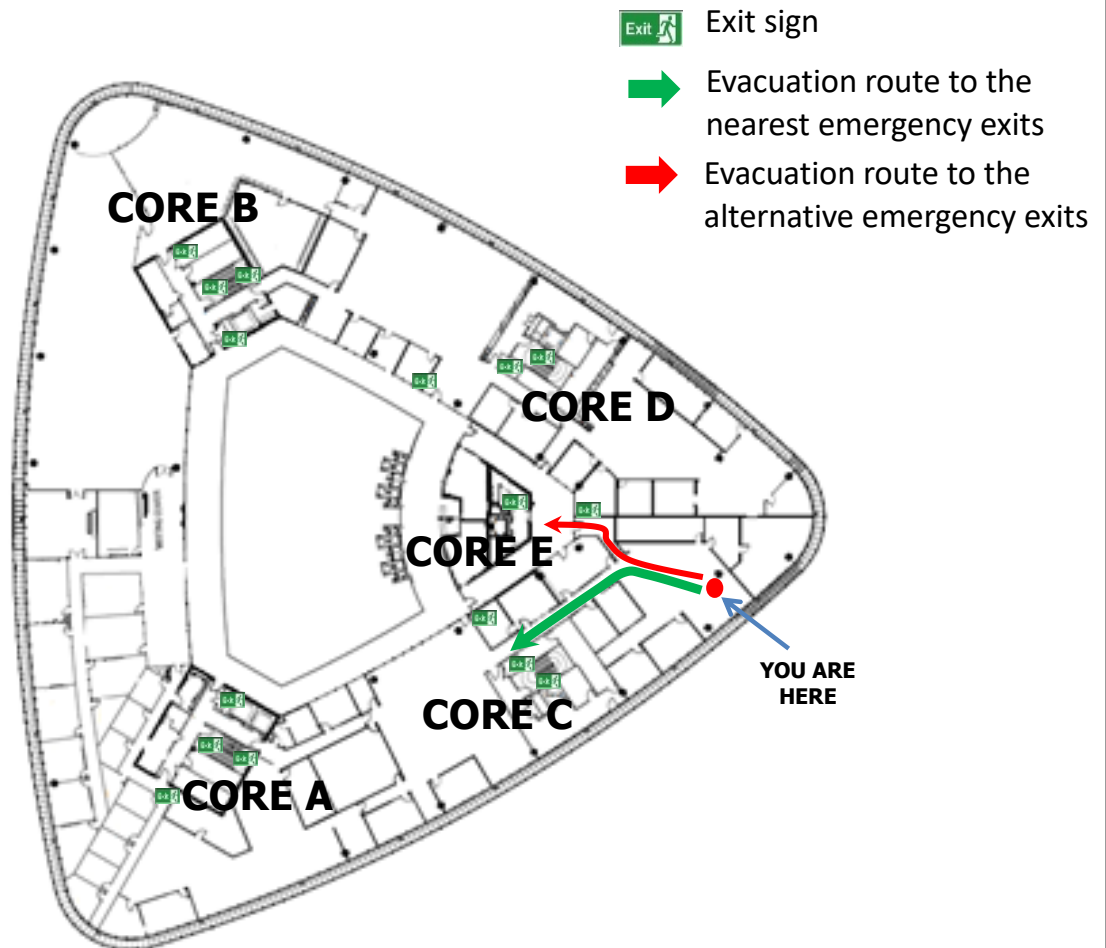
ALERT

- If you notice any incident that may threaten yours and your colleagues' well-being, please call the SC Hotline immediately at 03-62048886/8887.
- Remain calm, state your full name and location, describe the emergency, and follow the instructions from the SC Hotline.

In Case of Emergency

Evacuation Route

(Office Area Core C , Level 1)



EVACUATION

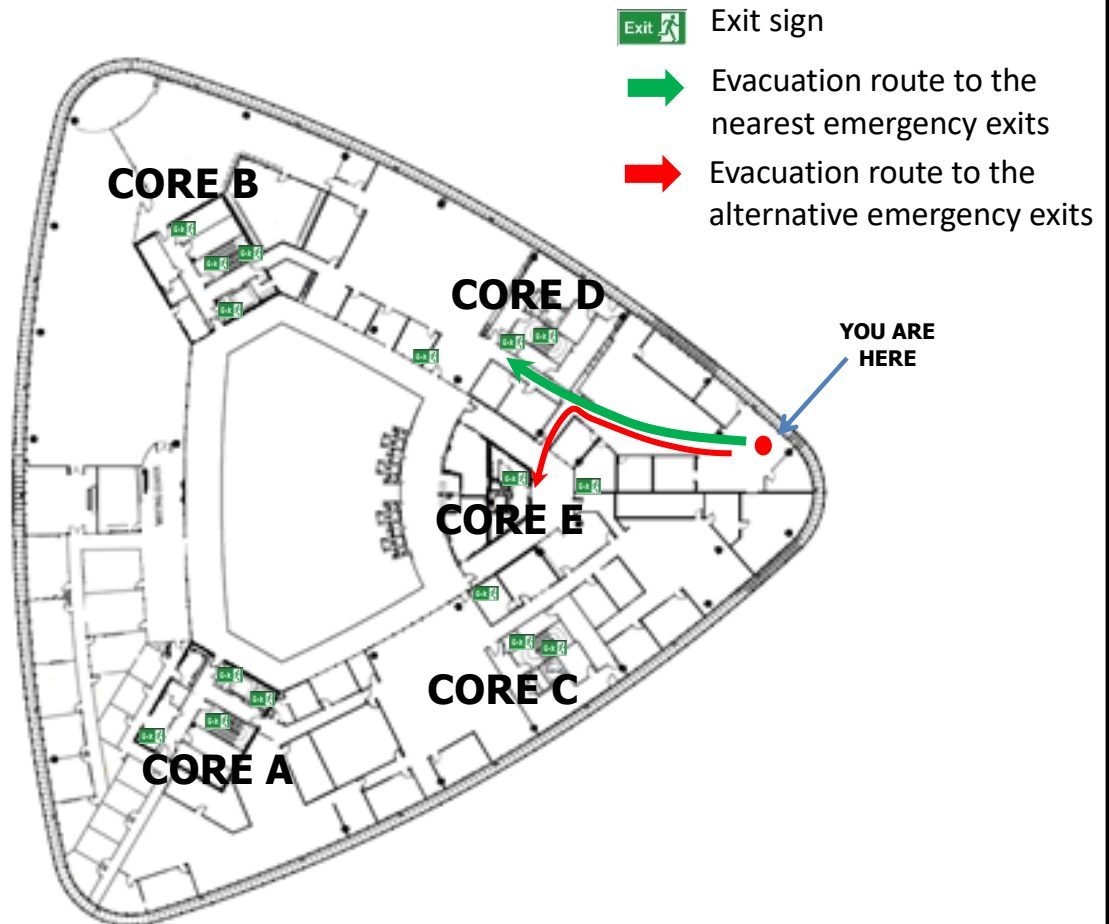
- Upon hearing the fire alarm, wait for further instructions before commencing to leave the building.
- Once the instruction is given for evacuation, collect only essential items.
- Do not use the lifts. Proceed to the nearest exit and make your way down to the Ground Floor exits.
- If the nearest exit is inaccessible, then move to the other alternative exits.
- Make your way to the emergency assembly area located at the open carpark of the National Science Centre.

ALERT

- If you notice any incident that may threaten yours and your colleagues' well-being, please call the SC Hotline immediately at 03-62048886/8887.
- Remain calm, state your full name and location, describe the emergency, and follow the instructions from the SC Hotline.

In Case of Emergency

Evacuation Route (SIDC, Level 1)



EVACUATION

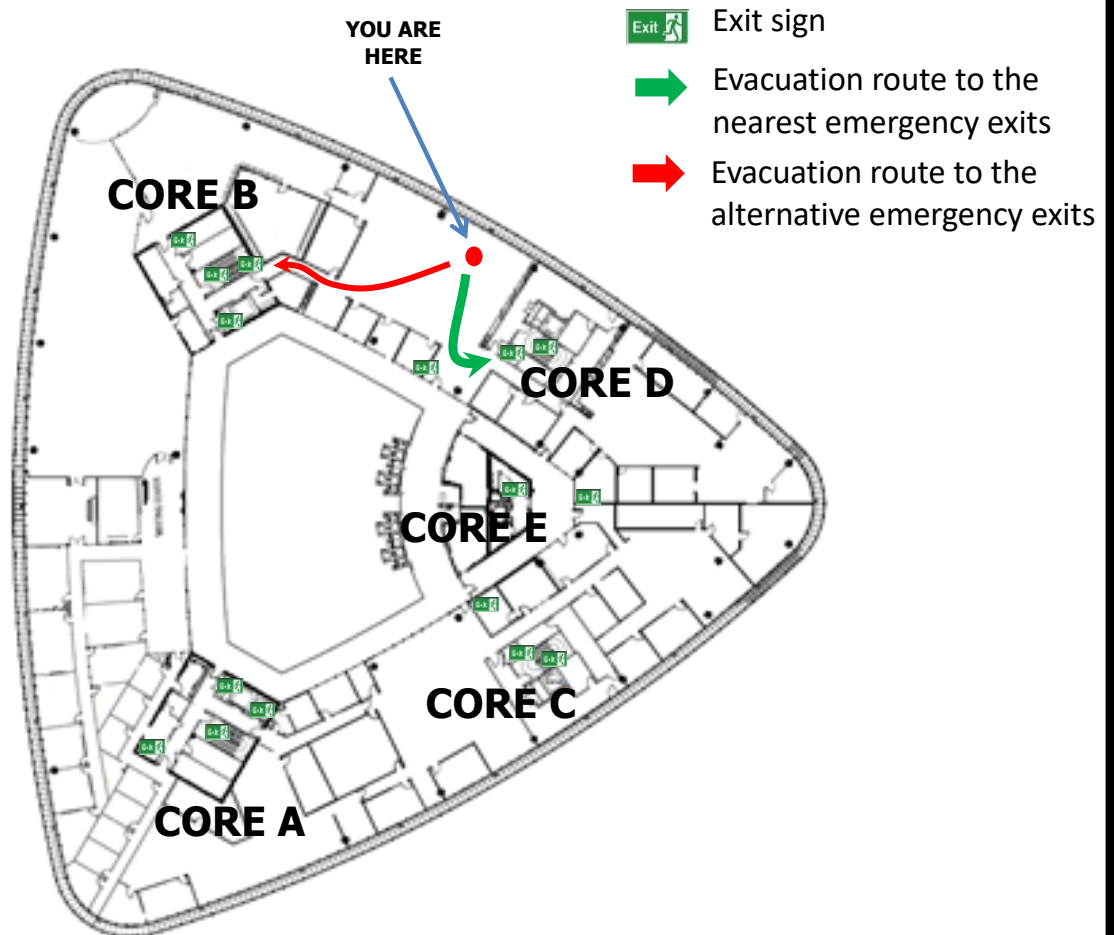
- Upon hearing the fire alarm, wait for further instructions before commencing to leave the building.
- Once the instruction is given for evacuation, collect only essential items.
- Do not use the lifts. Proceed to the nearest exit and make your way down to the Ground Floor exits.
- If the nearest exit is inaccessible, then move to the other alternative exits.
- Make your way to the emergency assembly area located at the open carpark of the National Science Centre.

ALERT

- If you notice any incident that may threaten yours and your colleagues' well-being, please call the SC Hotline immediately at 03-62048886/8887.
- Remain calm, state your full name and location, describe the emergency, and follow the instructions from the SC Hotline.

In Case of Emergency

Evacuation Route (SIDC, Level 1)



EVACUATION

- Upon hearing the fire alarm, wait for further instructions before commencing to leave the building.
- Once the instruction is given for evacuation, collect only essential items.
- Do not use the lifts. Proceed to the nearest exit and make your way down to the Ground Floor exits.
- If the nearest exit is inaccessible, then move to the other alternative exits.
- Make your way to the emergency assembly area located at the open carpark of the National Science Centre.

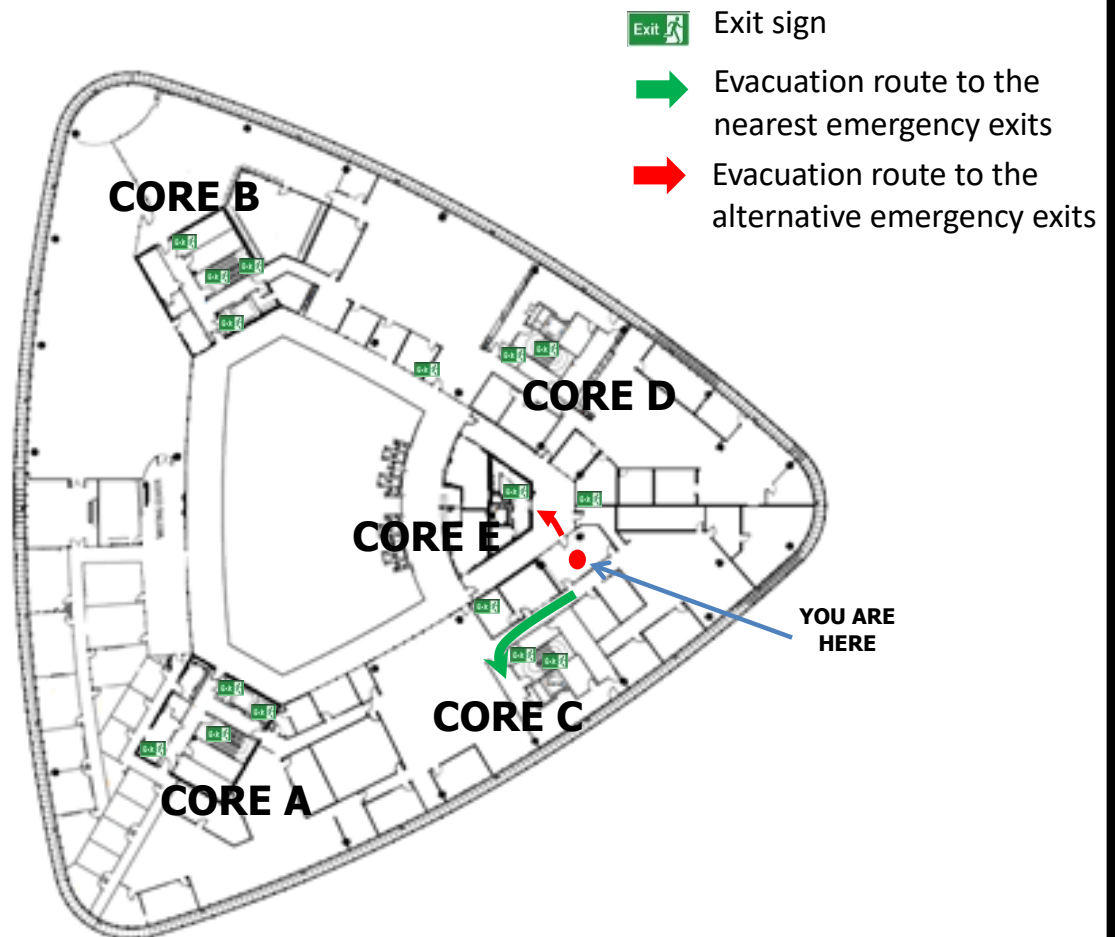
ALERT

- If you notice any incident that may threaten yours and your colleagues' well-being, please call the SC Hotline immediately at 03-62048886/8887.
- Remain calm, state your full name and location, describe the emergency, and follow the instructions from the SC Hotline.

In Case of Emergency

Evacuation Route

(PCR Meeting Room , Level 1)



EVACUATION

- Upon hearing the fire alarm, wait for further instructions before commencing to leave the building.
- Once the instruction is given for evacuation, collect only essential items.
- Do not use the lifts. Proceed to the nearest exit and make your way down to the Ground Floor exits.
- If the nearest exit is inaccessible, then move to the other alternative exits.
- Make your way to the emergency assembly area located at the open carpark of the National Science Centre.

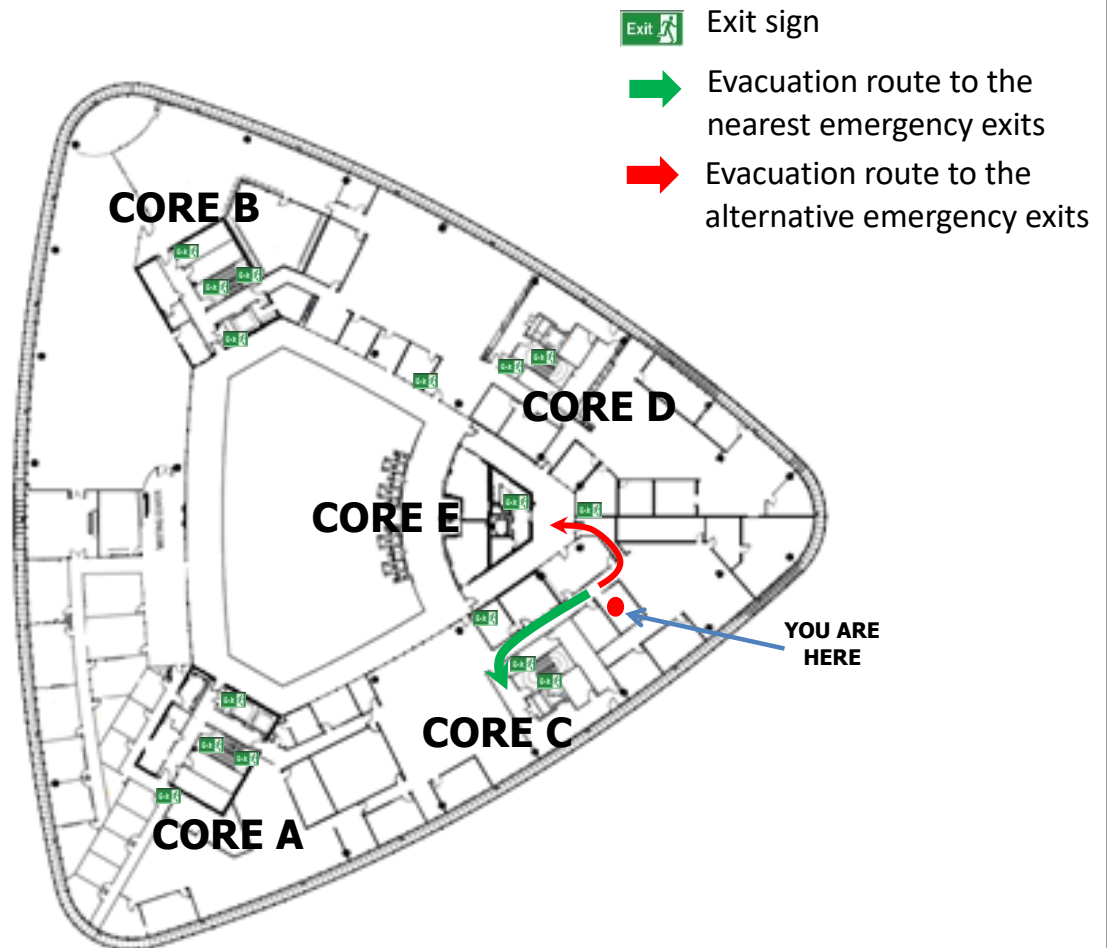
ALERT

- If you notice any incident that may threaten yours and your colleagues' well-being, please call the SC Hotline immediately at 03-62048886/8887.
- Remain calm, state your full name and location, describe the emergency, and follow the instructions from the SC Hotline.

In Case of Emergency

Evacuation Route

(Recruitment Room , Level 1)



EVACUATION

- Upon hearing the fire alarm, wait for further instructions before commencing to leave the building.
- Once the instruction is given for evacuation, collect only essential items.
- Do not use the lifts. Proceed to the nearest exit and make your way down to the Ground Floor exits.
- If the nearest exit is inaccessible, then move to the other alternative exits.
- Make your way to the emergency assembly area located at the open carpark of the National Science Centre.

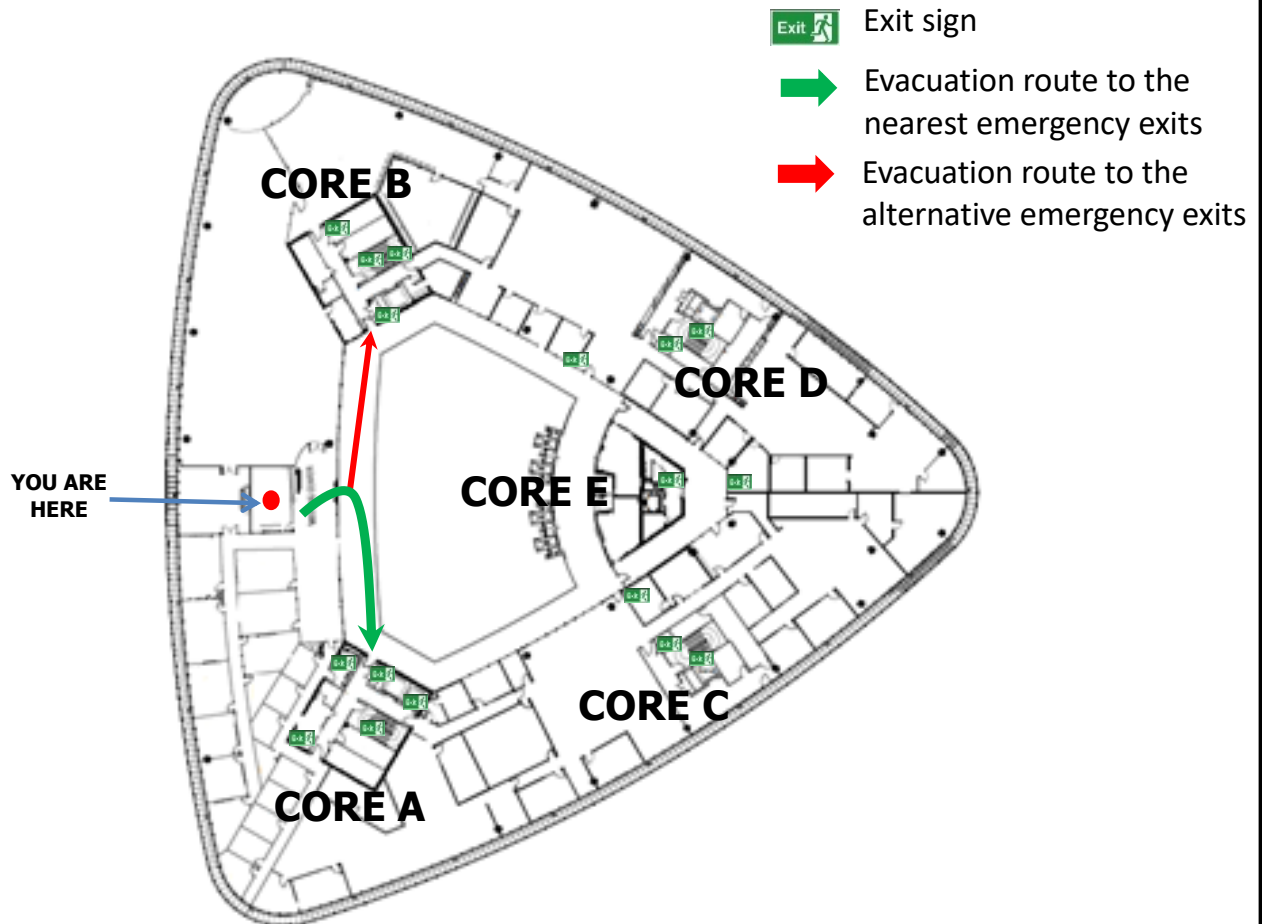
ALERT

- If you notice any incident that may threaten yours and your colleagues' well-being, please call the SC Hotline immediately at 03-62048886/8887.
- Remain calm, state your full name and location, describe the emergency, and follow the instructions from the SC Hotline.

In Case of Emergency

Evacuation Route

(Meeting Room 1 - 9, Level 1)



EVACUATION

- Upon hearing the fire alarm, wait for further instructions before commencing to leave the building.
- Once the instruction is given for evacuation, collect only essential items.
- Do not use the lifts. Proceed to the nearest exit and make your way down to the Ground Floor exits.
- If the nearest exit is inaccessible, then move to the other alternative exits.
- Make your way to the emergency assembly area located at the open carpark of the National Science Centre.

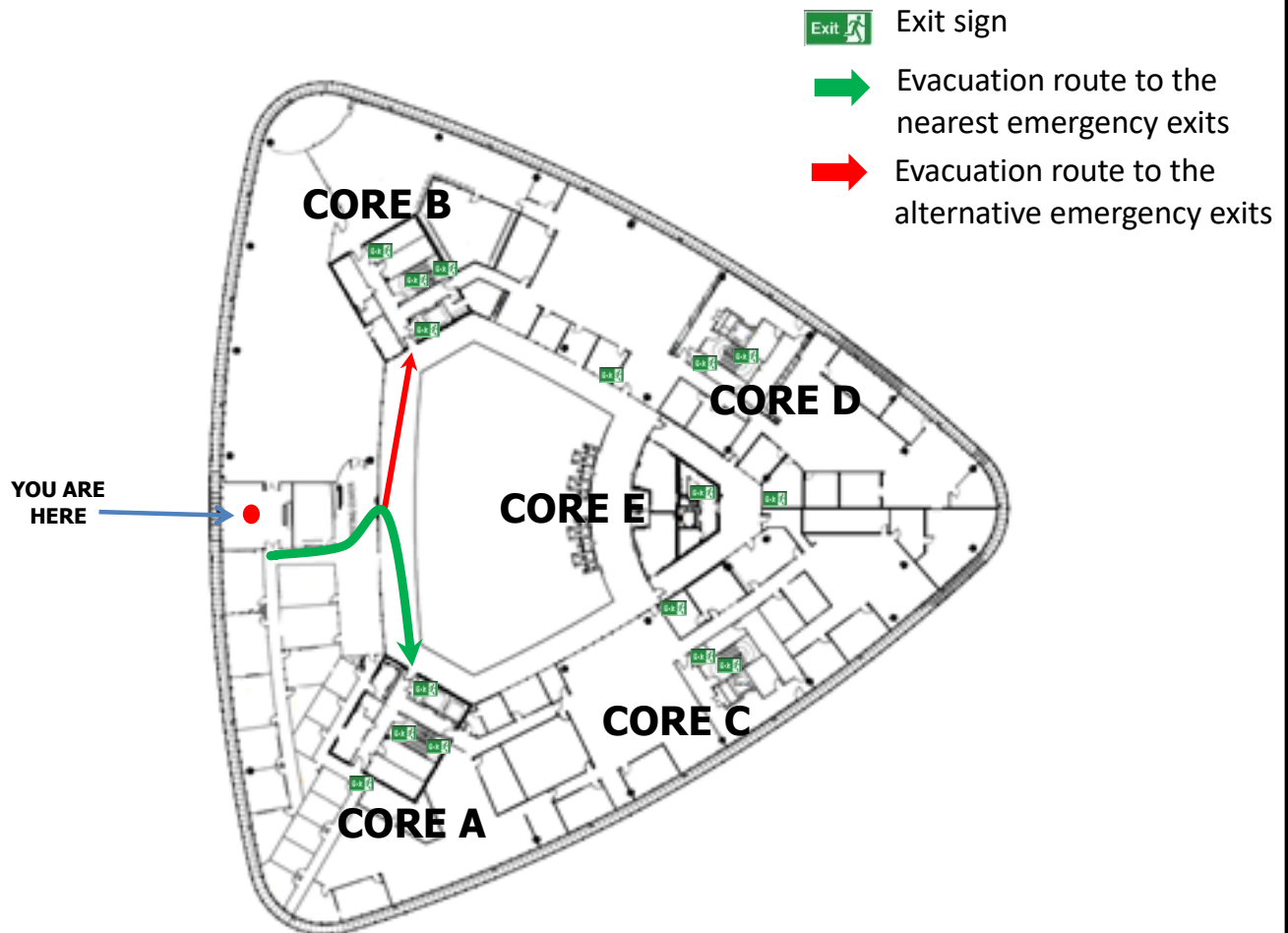
ALERT

- If you notice any incident that may threaten yours and your colleagues' well-being, please call the SC Hotline immediately at 03-62048886/8887.
- Remain calm, state your full name and location, describe the emergency, and follow the instructions from the SC Hotline.

In Case of Emergency

Evacuation Route

(AV Meeting Room , Level 1)



EVACUATION

- Upon hearing the fire alarm, wait for further instructions before commencing to leave the building.
- Once the instruction is given for evacuation, collect only essential items.
- Do not use the lifts. Proceed to the nearest exit and make your way down to the Ground Floor exits.
- If the nearest exit is inaccessible, then move to the other alternative exits.
- Make your way to the emergency assembly area located at the open carpark of the National Science Centre.

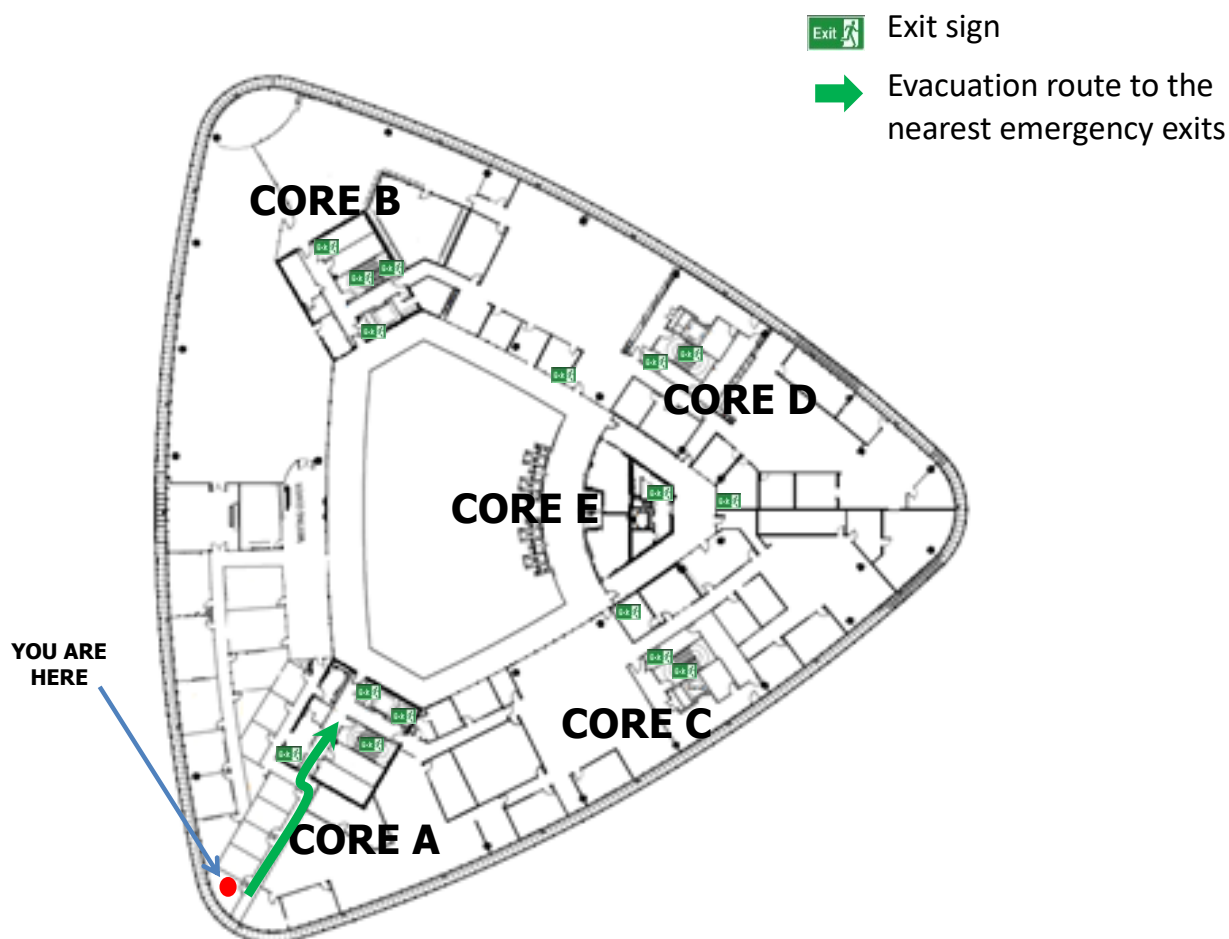
ALERT

- If you notice any incident that may threaten yours and your colleagues' well-being, please call the SC Hotline immediately at 03-62048886/8887.
- Remain calm, state your full name and location, describe the emergency, and follow the instructions from the SC Hotline.

In Case of Emergency

Evacuation Route

(Statement Recording Room 1 - 8 , Level 1)



EVACUATION

- Upon hearing the fire alarm, wait for further instructions before commencing to leave the building.
- Once the instruction is given for evacuation, collect only essential items.
- Do not use the lifts. Proceed to the nearest exit and make your way down to the Ground Floor exits.
- If the nearest exit is inaccessible, then move to the other alternative exits.
- Make your way to the emergency assembly area located at the open carpark of the National Science Centre.

ALERT

- If you notice any incident that may threaten yours and your colleagues' well-being, please call the SC Hotline immediately at 03-62048886/8887.
- Remain calm, state your full name and location, describe the emergency, and follow the instructions from the SC Hotline.